

ESFP - THE PERFORMER

Ideal Careers:

Teacher, Recreation Worker, Social Worker, Nurse, Physical Therapist, Massage Therapist, Occupational Therapist, Fitness Trainer, Dietician, Child Care, Musician, Artist, Journalist, Provider, Cosmetologist, Public Relations Officer, Real Estate Agent, Retail Manager, Insurance Agent, Receptionist, Farmer, Landscape Architect

Options at UKZN

- ❖ Bachelor of Arts Music
- ❖ Bachelor of Social Science (General Studies)
- ❖ Bachelor of Arts Music and Drama Performance
- ❖ Diploma Jazz and Popular Music
- ❖ Diploma Music Performance or African Music and Dance or Opera or Choral Studies
- ❖ Music Foundation Programme
- ❖ Bachelor of Education (Foundation Phase)
- ❖ Bachelor of Sport Science
- ❖ Bachelor of Science Agric. Animal & Poultry Science
- ❖ Bachelor of Arts Visual Art
- ❖ Bachelor of Arts (General Studies)
- ❖ Bachelor of Nursing
- ❖ Bachelor of Physiotherapy
- ❖ Bachelor of Occupational Therapy
- ❖ Bachelor of Science Dietetics and Human Nutrition
- ❖ Bachelor of Science Crop and Horticultural Science

If you wish to study something else, this is up to you as long as you meet the requirements and have the skills, abilities and interest in the career of your choice. Make sure, you do as much research as possible on a specific career. Kindly consult FET Colleges and Universities of Technology for courses related to vocational courses.

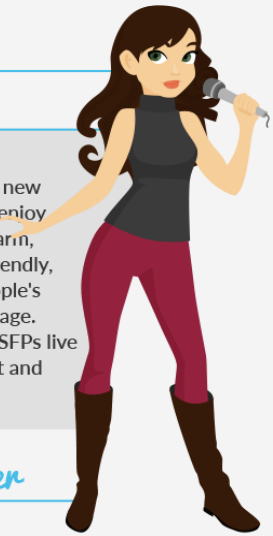
This test is only an indicator and is a tool used to give you an idea of your personality traits and related careers. Students are advised to consult with the Institutes Career Counsellors for additional information on career choices and course offerings.



ESFP

What are ESFP's like?

ESFPs are "people people" with strong interpersonal skills. They love people and new experiences. They are lively and fun, and enjoy being the center of attention. They are warm, spontaneous, generous, optimistic and friendly, sympathetic and concerned for other people's well-being. For the ESFP, the world is a stage. They love to be the center of attention. ESFPs live in the here-and-now, and love excitement and drama.



The Performer

Extravert

Likes to be around people. Active, has high energy. Likes to take initiative. Outgoing and enthusiastic. Talks more than listens.

Sensing

Aware of, and trusting facts, specifics, details, past experience and present realities. Is often observant, realistic and pragmatic. Lives in the here-and-now.

Feeling

Uses personal values, feelings and subjective criteria to make decisions. Ruled by the heart, not the head. Diplomatic, tactful and empathetic. Motivated by appreciation and prefers to avoid arguments and conflicts.

Perceiving

Preferring spontaneity, flexibility and keeping options open. Being adaptable and going with the flow. Playful, less aware of time. Prefers to start projects, questions the need for many rules.

7 Common ESFP Traits

- 1 Strong interpersonal skills and enjoys being the center of attention
- 2 Warm, generous, sympathetic, and concerned for others
- 3 Lives in the here-and-now and loves excitement
- 4 Natural ability to understand the facts and realities of the world
- 5 Talent for entertaining those around them
- 6 Practical aptitude for common sense
- 7 Has a detailed approach to life and appreciation for the world around them